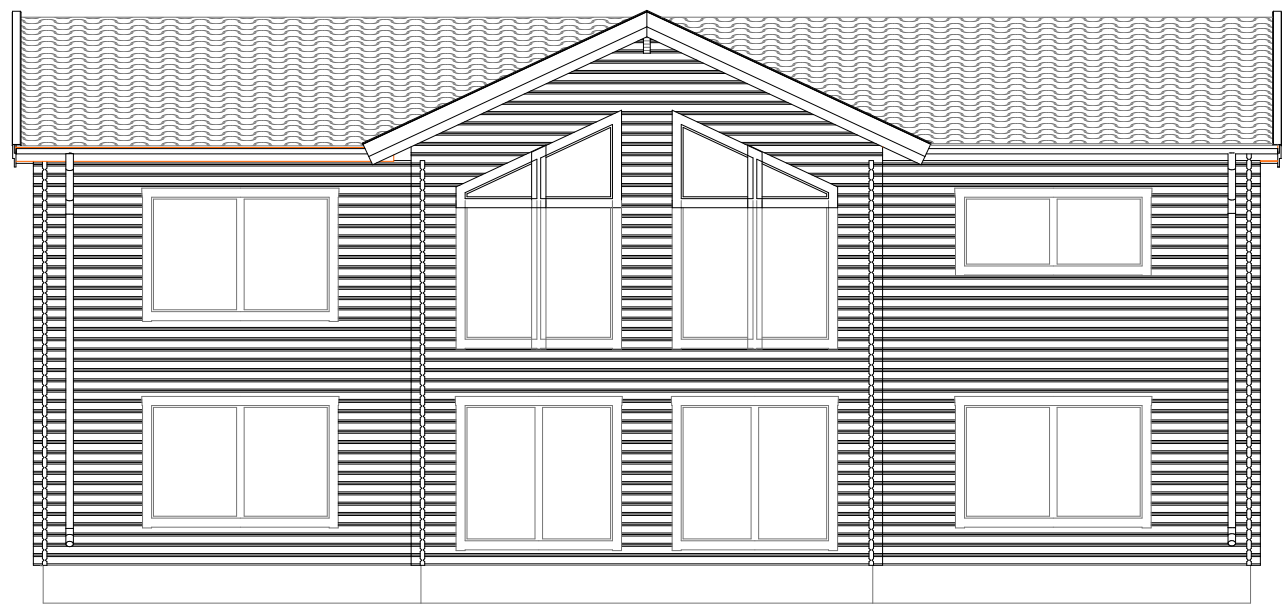
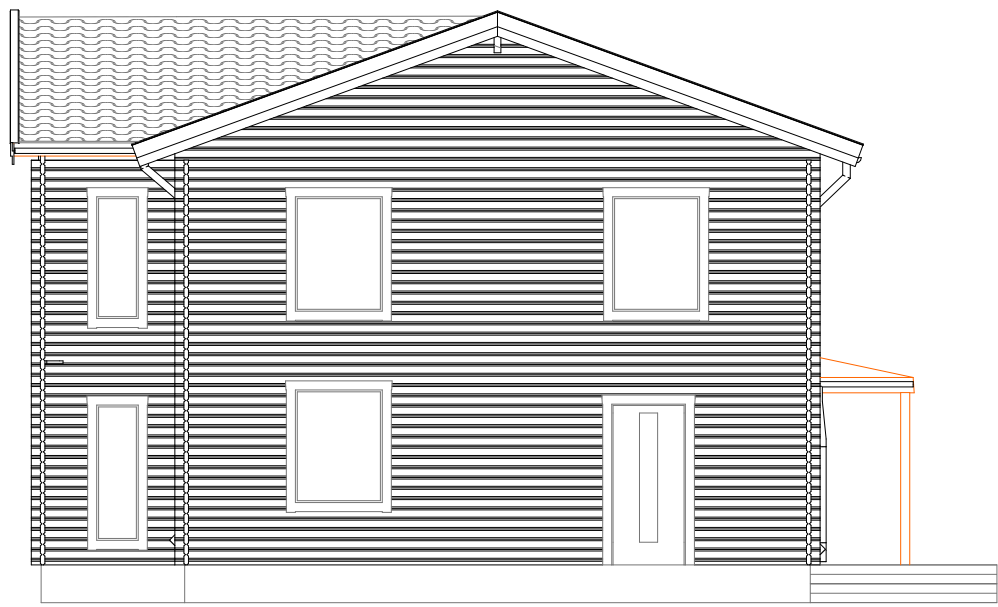


Huvudritning
 Bergsholmen L
Jörnträhus
 www.jorntrahus.se

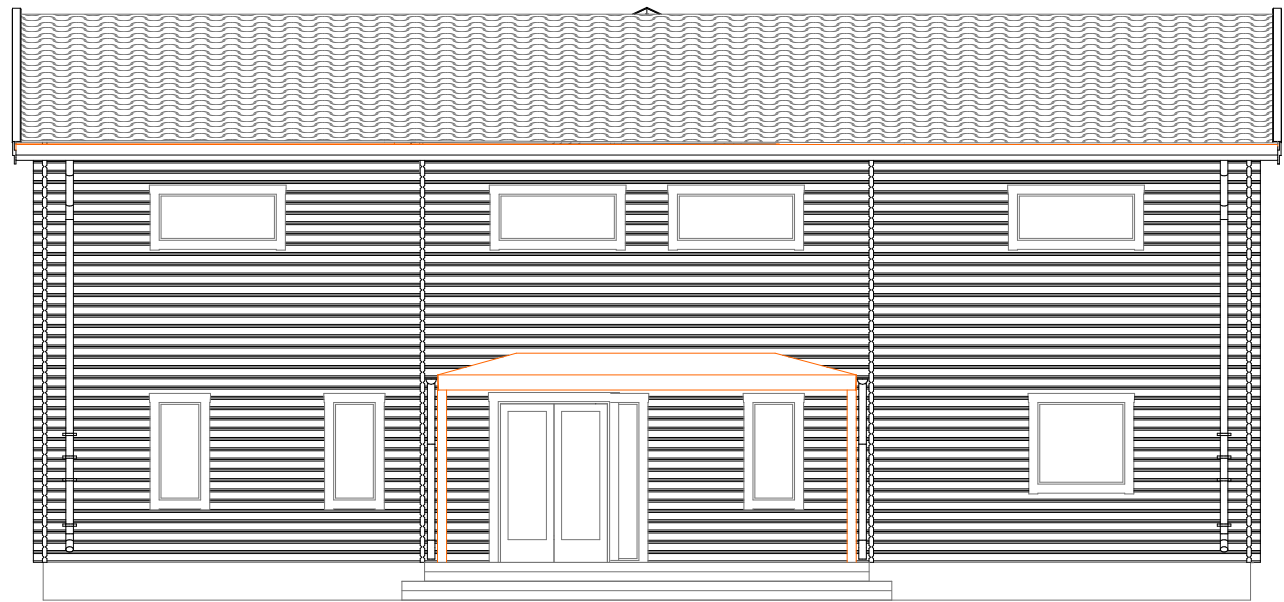
| | | |
|---------------------------------|-------------------|------------------|
| DATUM 18-01-01 | RITAD AV BJ/JL | OFFERTNR. STD |
| 2-planshus | Taklutning 20+25 | |
| 7 rum och kök | Bygghöjd 5,94m | |
| Boyta 127,8+111,7m ² | Nockhöjd 7,45m | |
| Byggyta 151,9m ² | | |



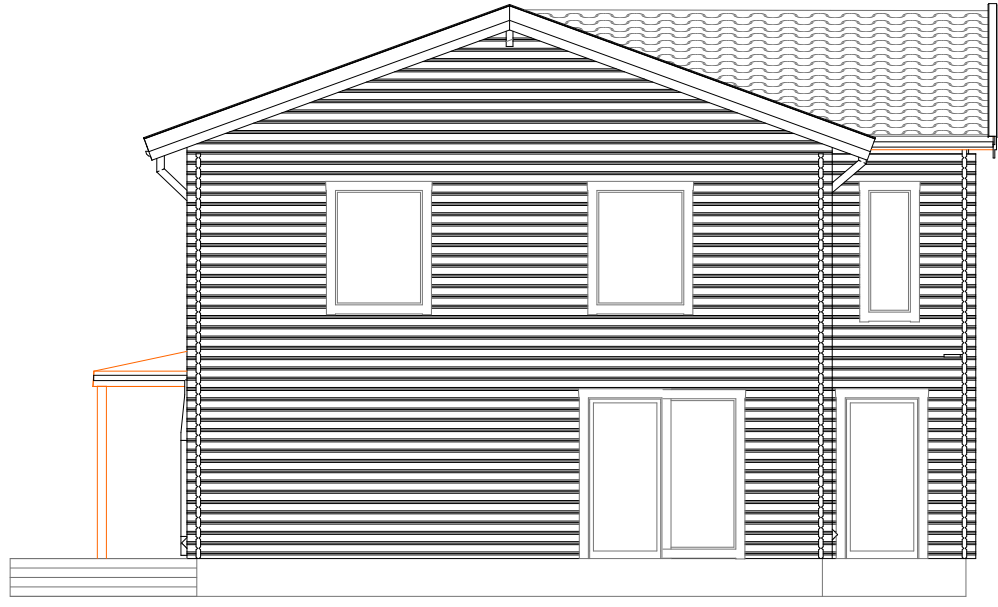
Fasad A1 (1)
1:100



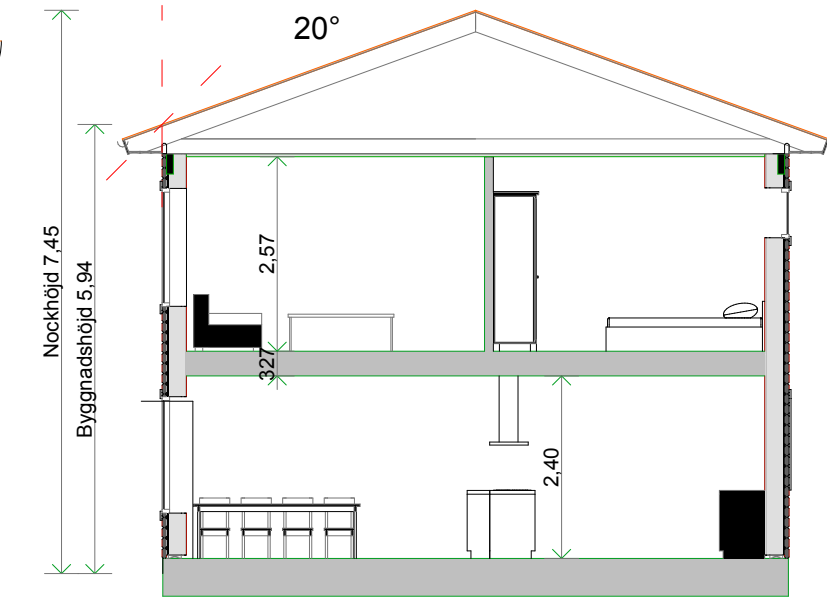
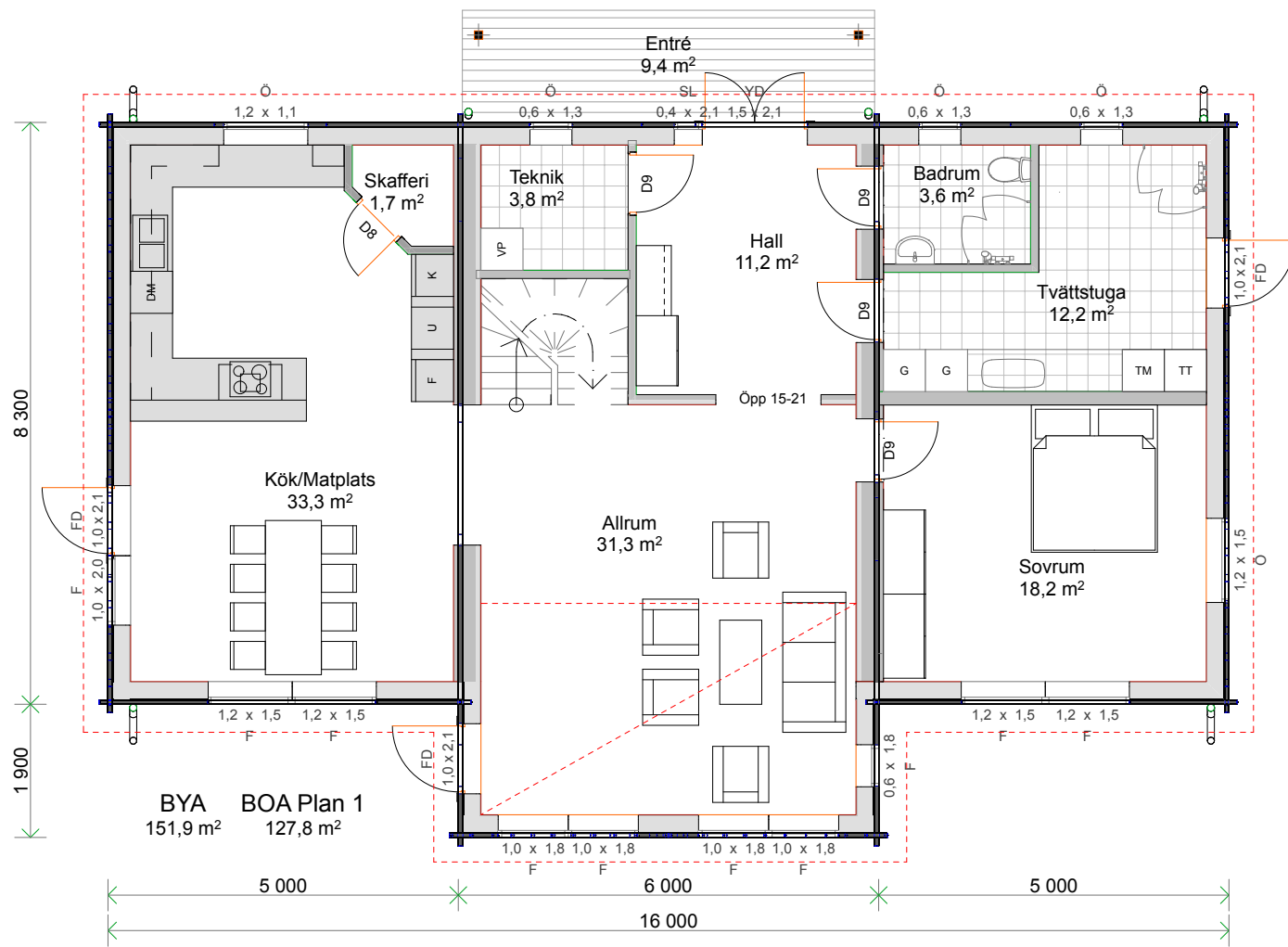
Fasad A2
1:100



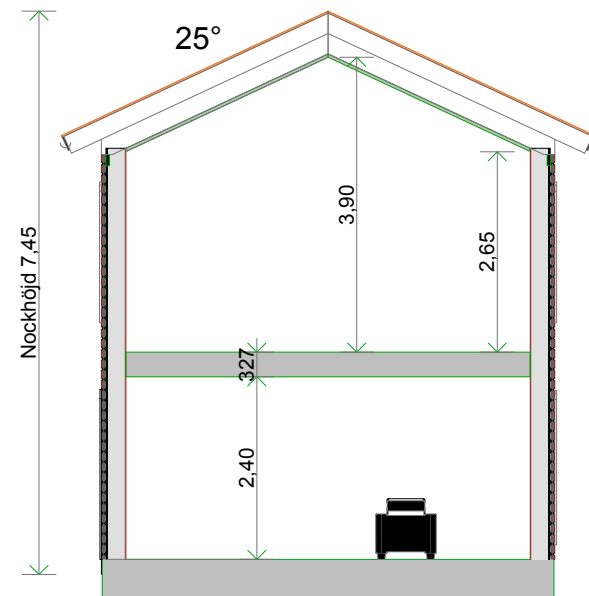
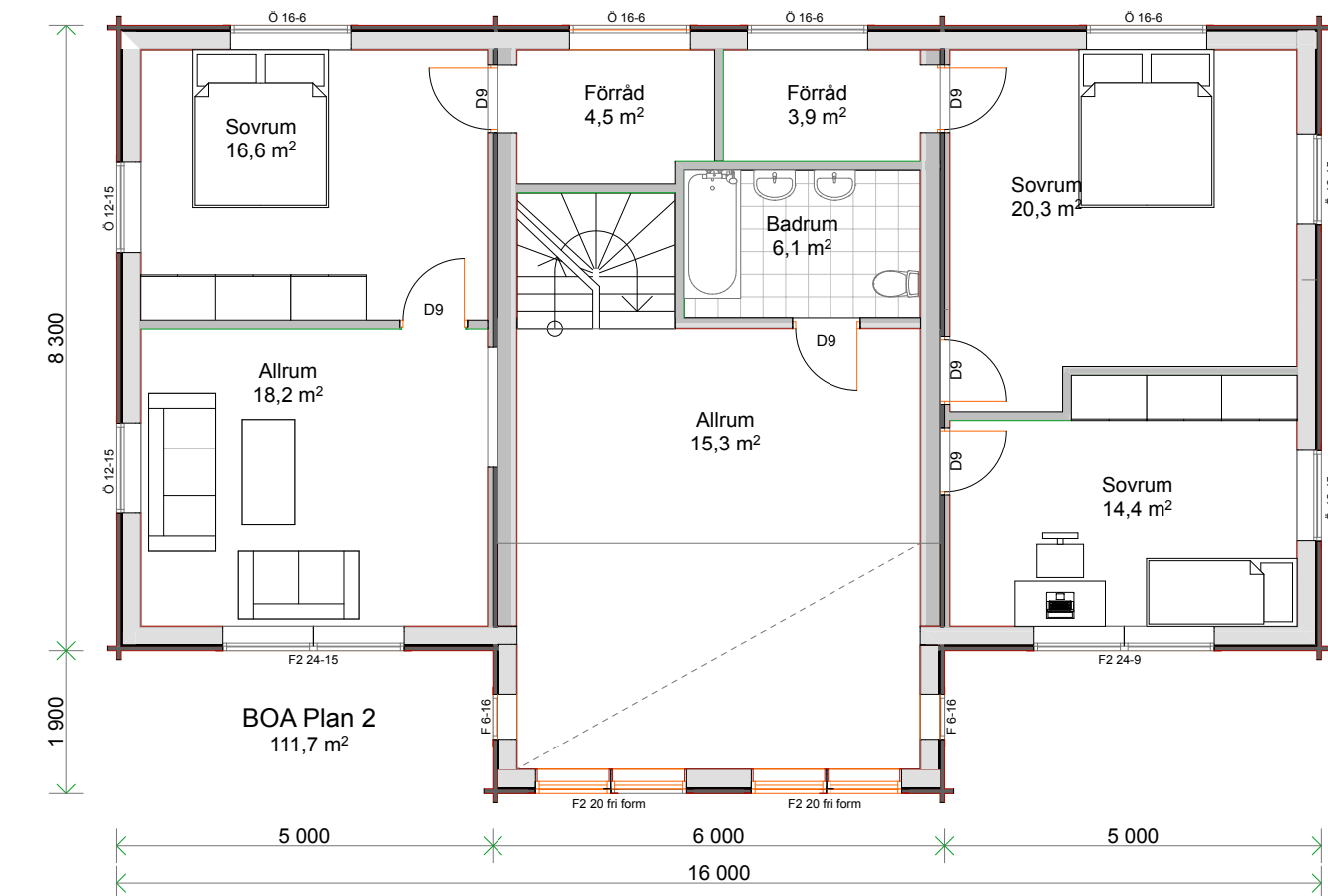
Fasad A3
1:100



Fasad A4
1:100



Sektion A-A (7)
1:100



Sektion A-A
1:100

Huvudritning
Bergsholmen L
Jörnträhus
www.jorntrahus.se

| DATUM | RITAD AV | OFFERTNR. |
|----------|----------|-----------|
| 18-01-01 | BJ/JL | STD |

2-planshus Taklutning 20+25
7 rum och kök Bygghöjd 5,94m
Boyta 127,8+111,7m² Nockhöjd 7,45m
Byggyta 151,9m²