

Standardritning
Lidlund L
Jörnträhus
www.jorntrahus.se

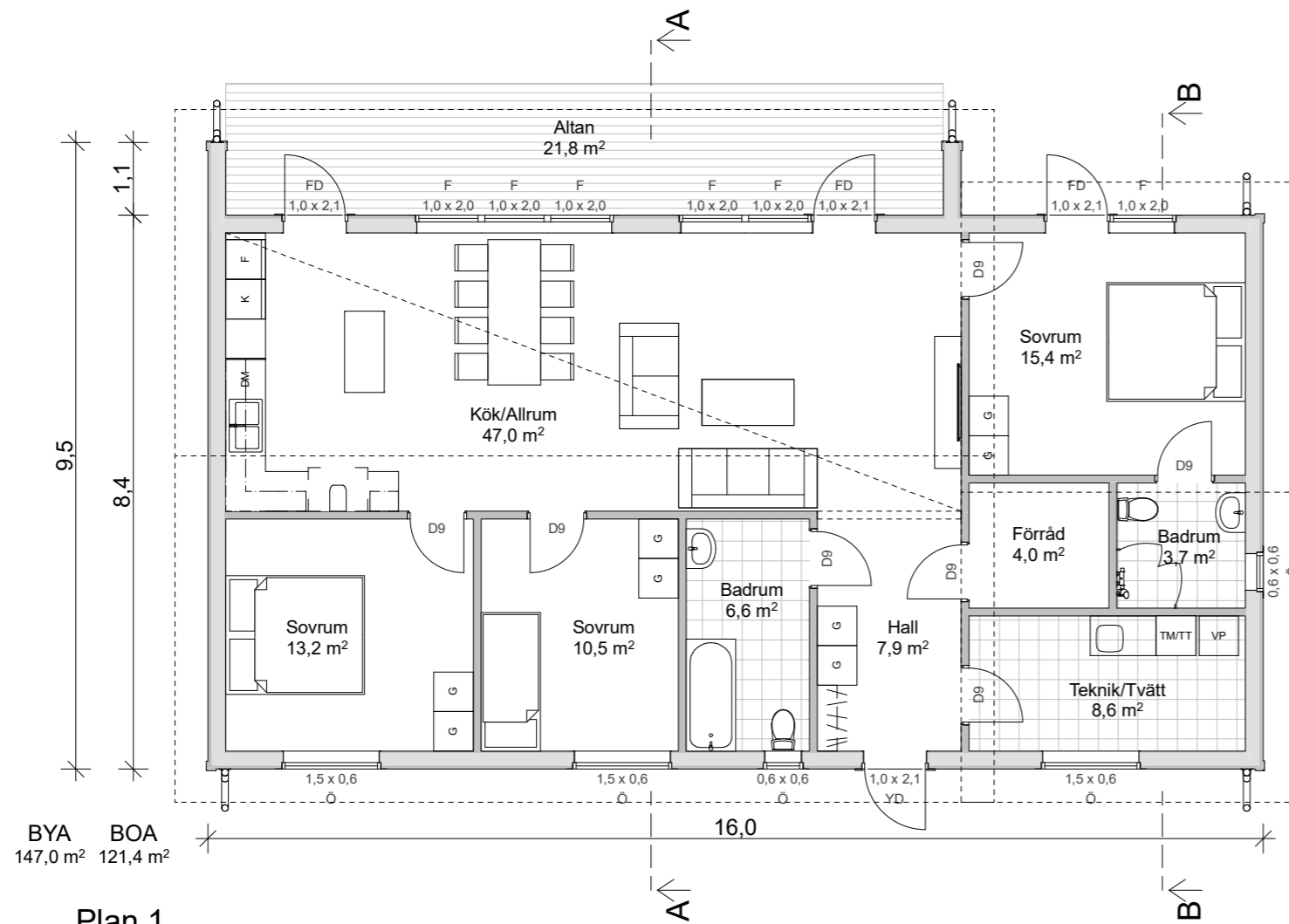
DATUM 18-11-29 RITAD AV OFFERTNR. STD

1-planshus Taklutning 27°
4 rum och kök
Boyta 121,4 m²
Byggyta 147,0 m²

GODKÄND FÖR TILLVERKNING

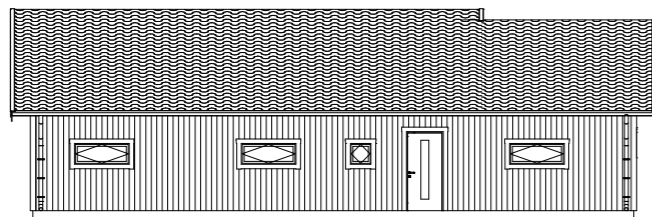
NAMN:.....

DATUM:.....

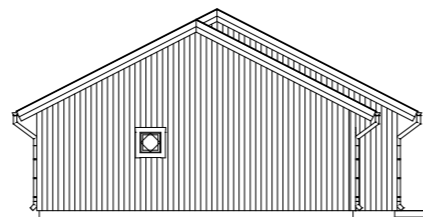


BYA 147,0 m² BOA 121,4 m²

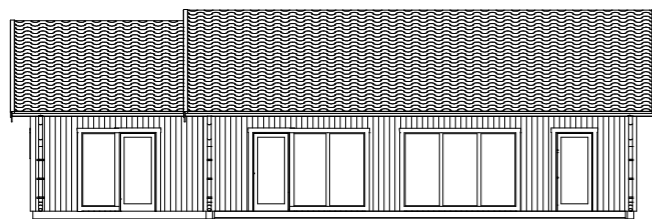
Plan 1
1:100



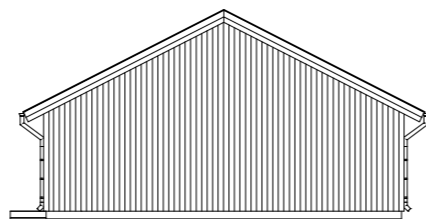
Fasad A1
1:200



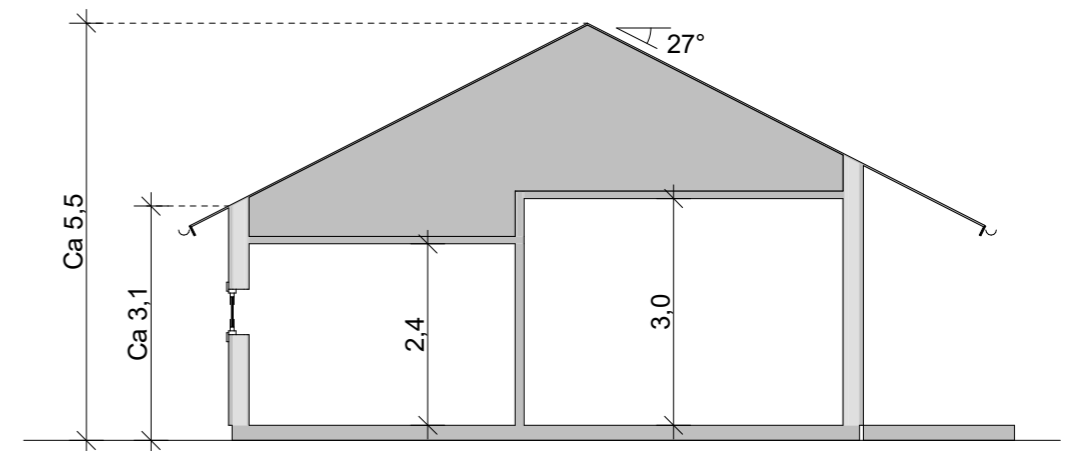
Fasad A2
1:200



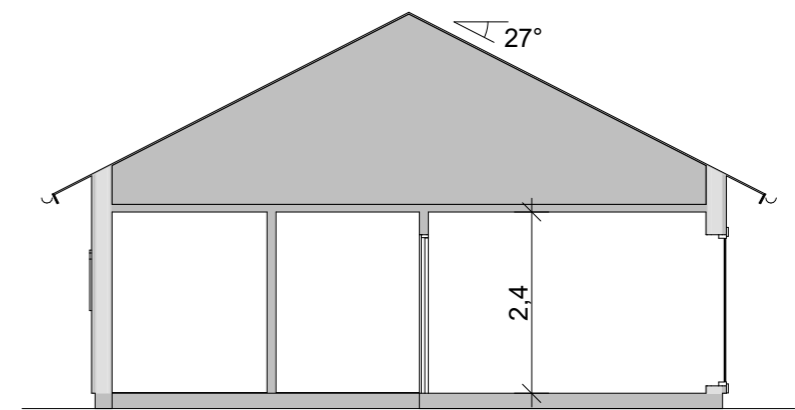
Fasad A3
1:200



Fasad A4
1:200



Sektion A
1:100



Sektion B
1:100