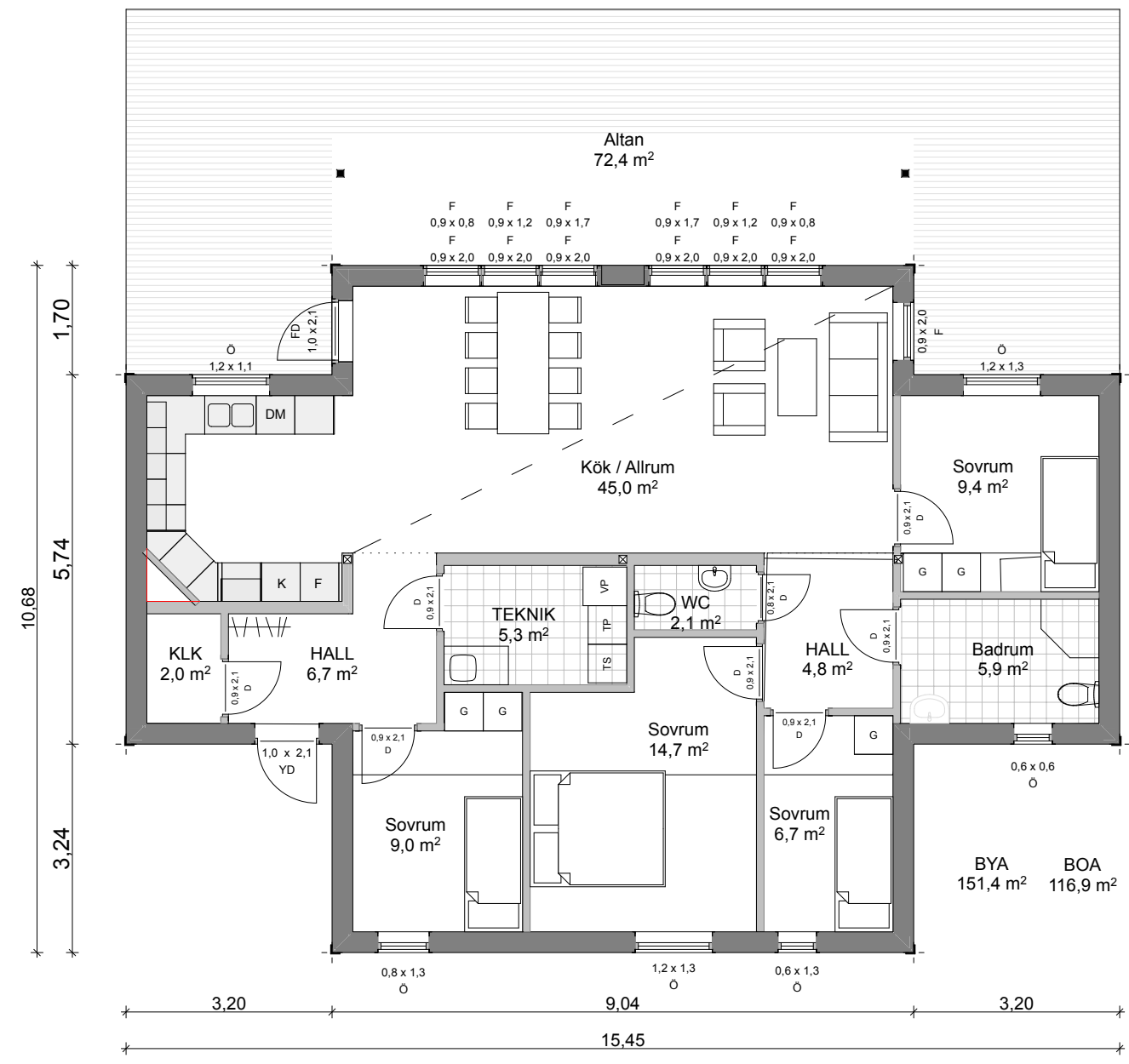


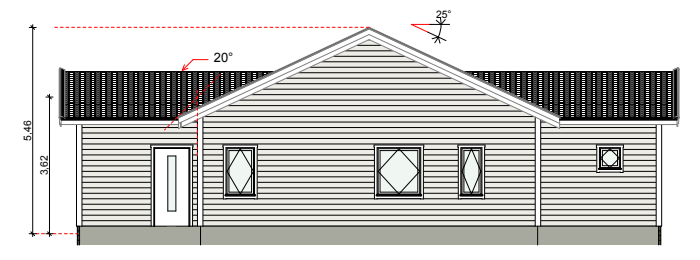
Standardritning
Strycksele XL
Jörnträhus
www.jorntrahus.se

DATUM 17-03-09 RITAD AV BJ STD

1-planshus Taklutning 25/20°
 5 rum och kök Bygghöjd 3,34 m
 Boyta 116,9 m² Nockhöjd 5,18 m
 Byggyta 151,4 m²



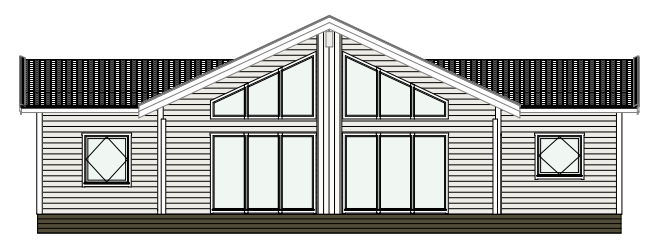
1. Våning 1 1:100



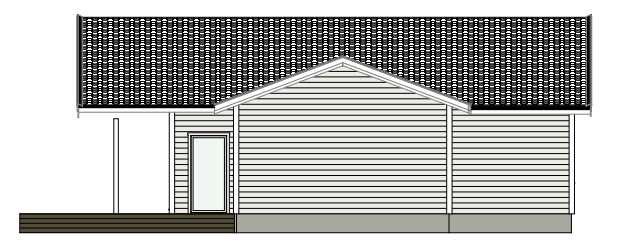
A1 Fasad A1 1:200



A2 Fasad A2 1:200



A3 Fasad A3 1:200



A4 Fasad A4 1:200