

Standardritning
Furuögrund 101
Jörnträhus
www.jorntrahus.se

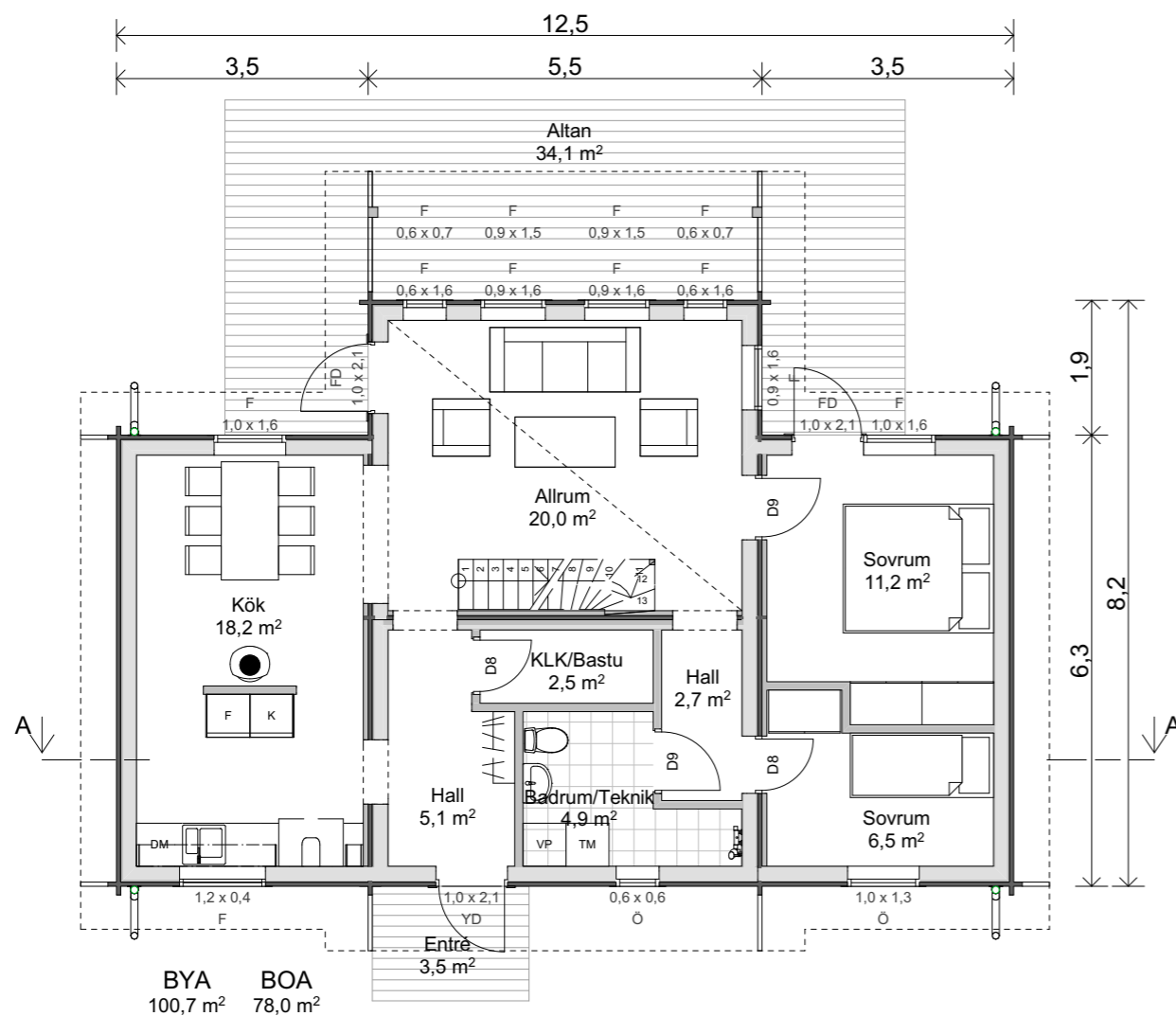
DATUM 20-12-18 RITAD AV OFFERTNR. STD

1-planshus med loft Taklutning 30°/25°
3 rum och kök
Boyta 78,0m² + 5,0m²
Byggyta 100,7m²
Golvyta Loft 16,3 m²

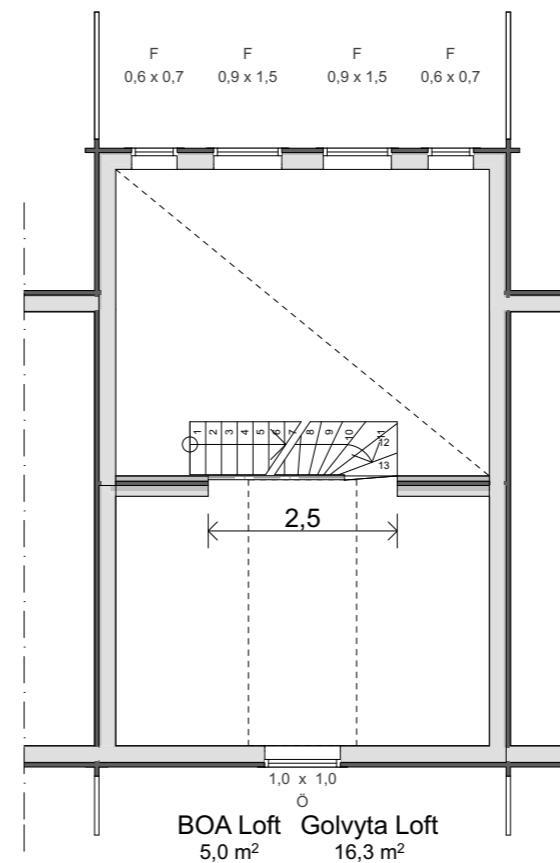
GODKÄND FÖR TILLVERKNING

NAMN:.....

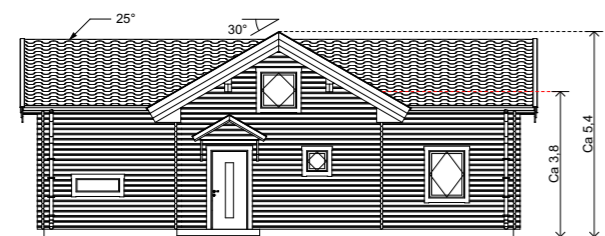
DATUM:.....



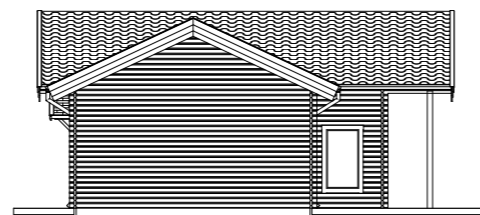
Plan 1
1:100



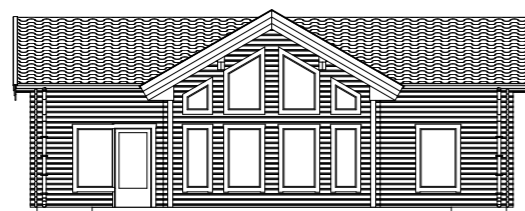
Plan Loft
1:100



Fasad A1
1:200



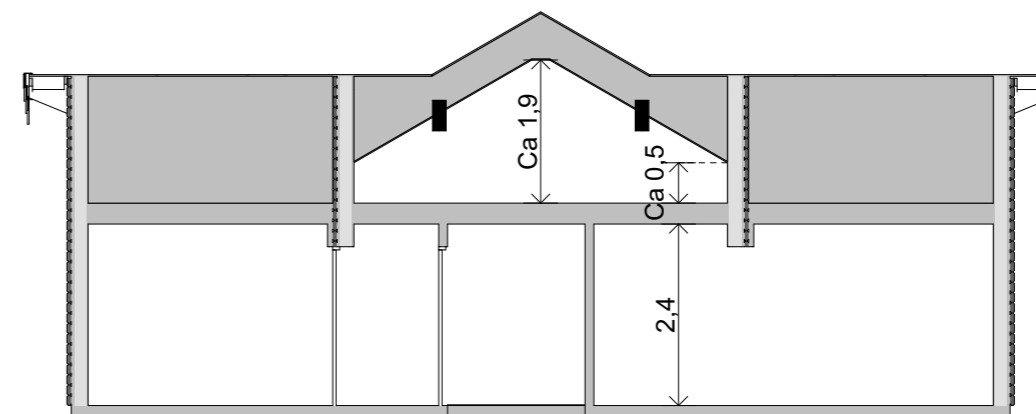
Fasad A2
1:200



Fasad A3
1:200



Fasad A4
1:200



Sektion A
1:100