

Standardritning
Furuögrund 148
Jörnträhus

www.jorntrahus.se

DATUM 20-12-18 RITAD AV OFFERTNR. STD

1-planshus med loft Taklutning 30°/25°

4 rum och kök

Boyta 110,7 +14,8 m²

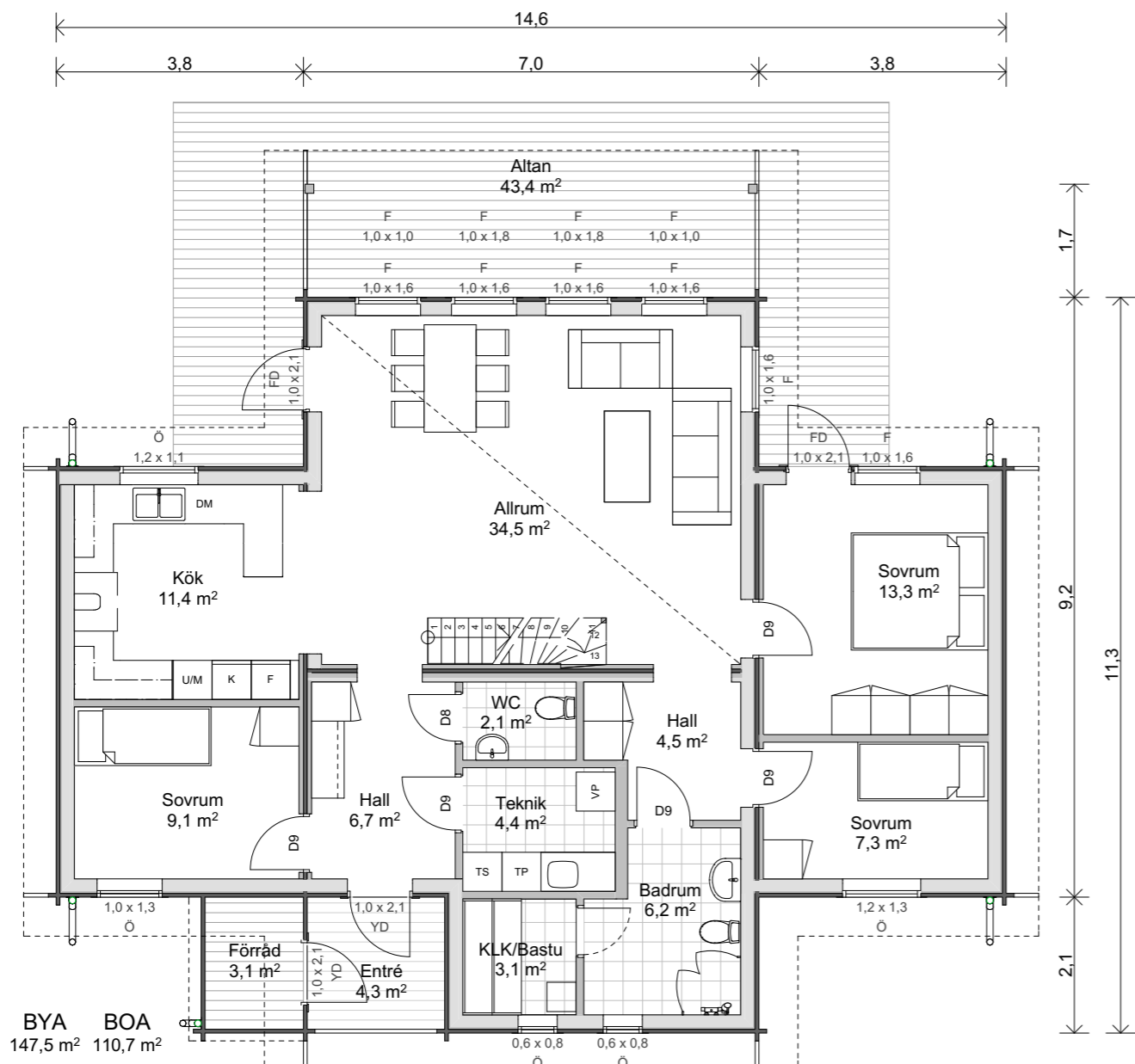
Byggyta 147,5 m²

Golvnya Loft 28,4 m²

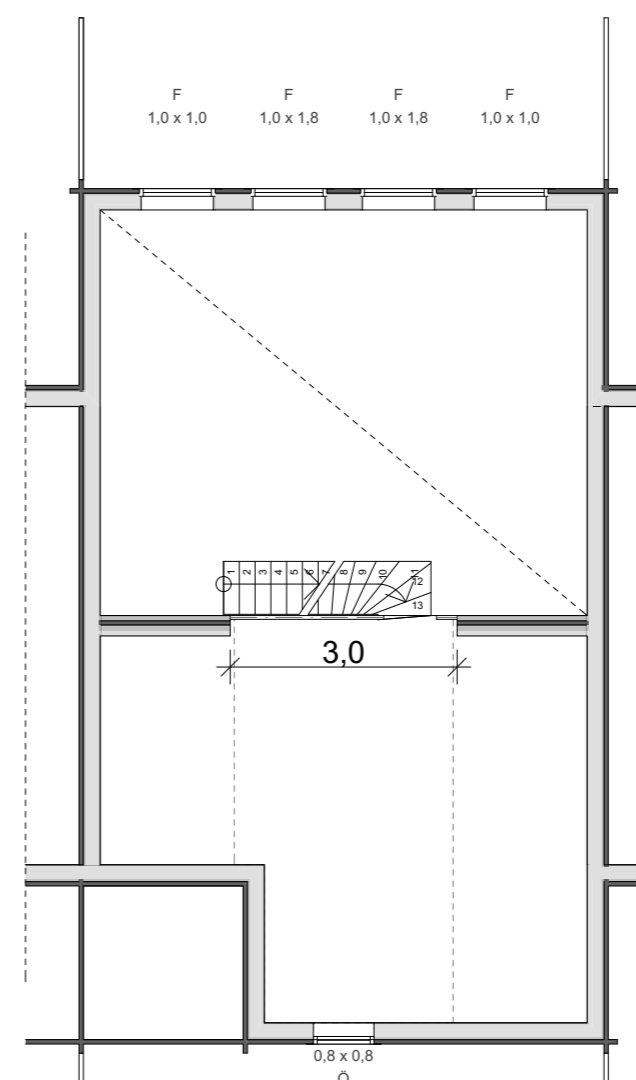
GODKÄND FÖR TILLVERKNING

NAMN:.....

DATUM:.....

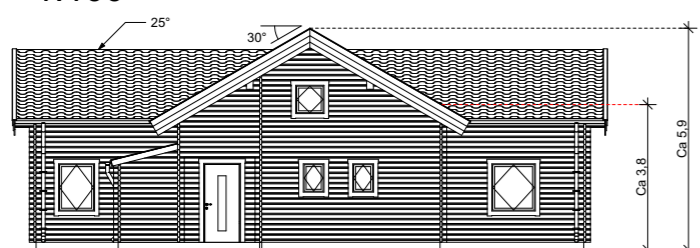


BYA BOA
147,5 m² 110,7 m²

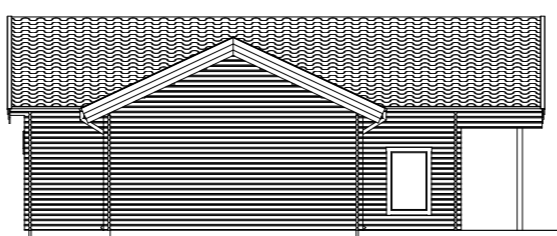


BOA Loft Golvnya Loft
14,8 m² 28,4 m²

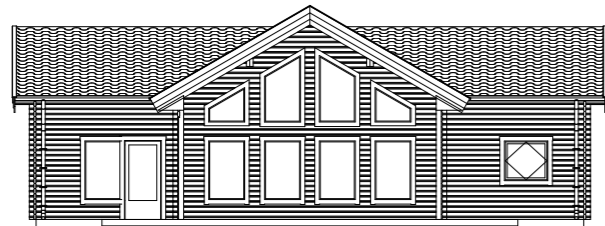
Plan 1
1:100



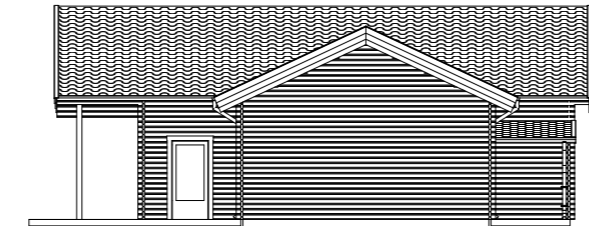
Fasad A1
1:200



Fasad A2
1:200

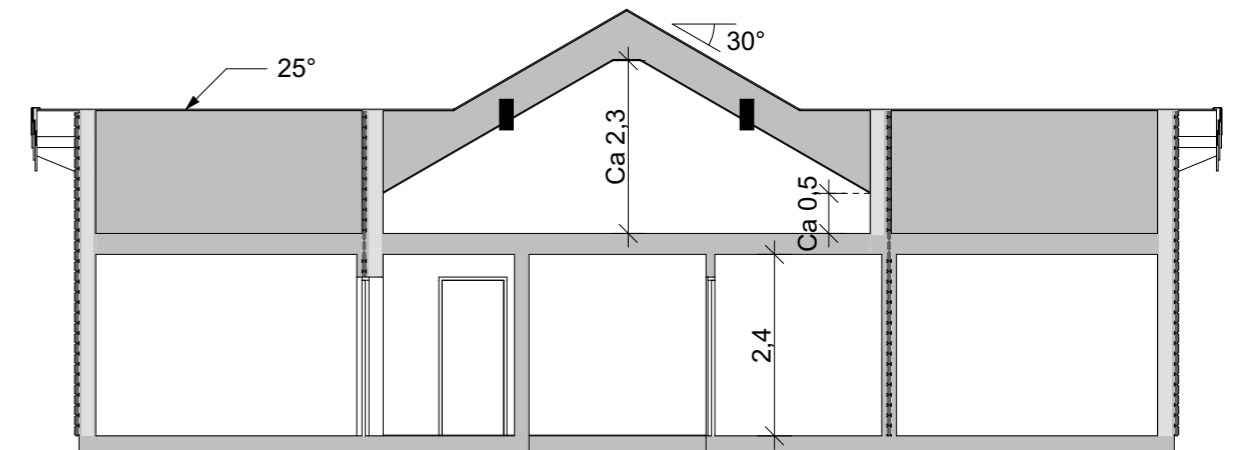


Fasad A3
1:200



Fasad A4
1:200

Plan Loft
1:100



Sektion A
1:100