

Standardritning
Hedlunda 107
Jörnträhus
www.jorntrahus.se

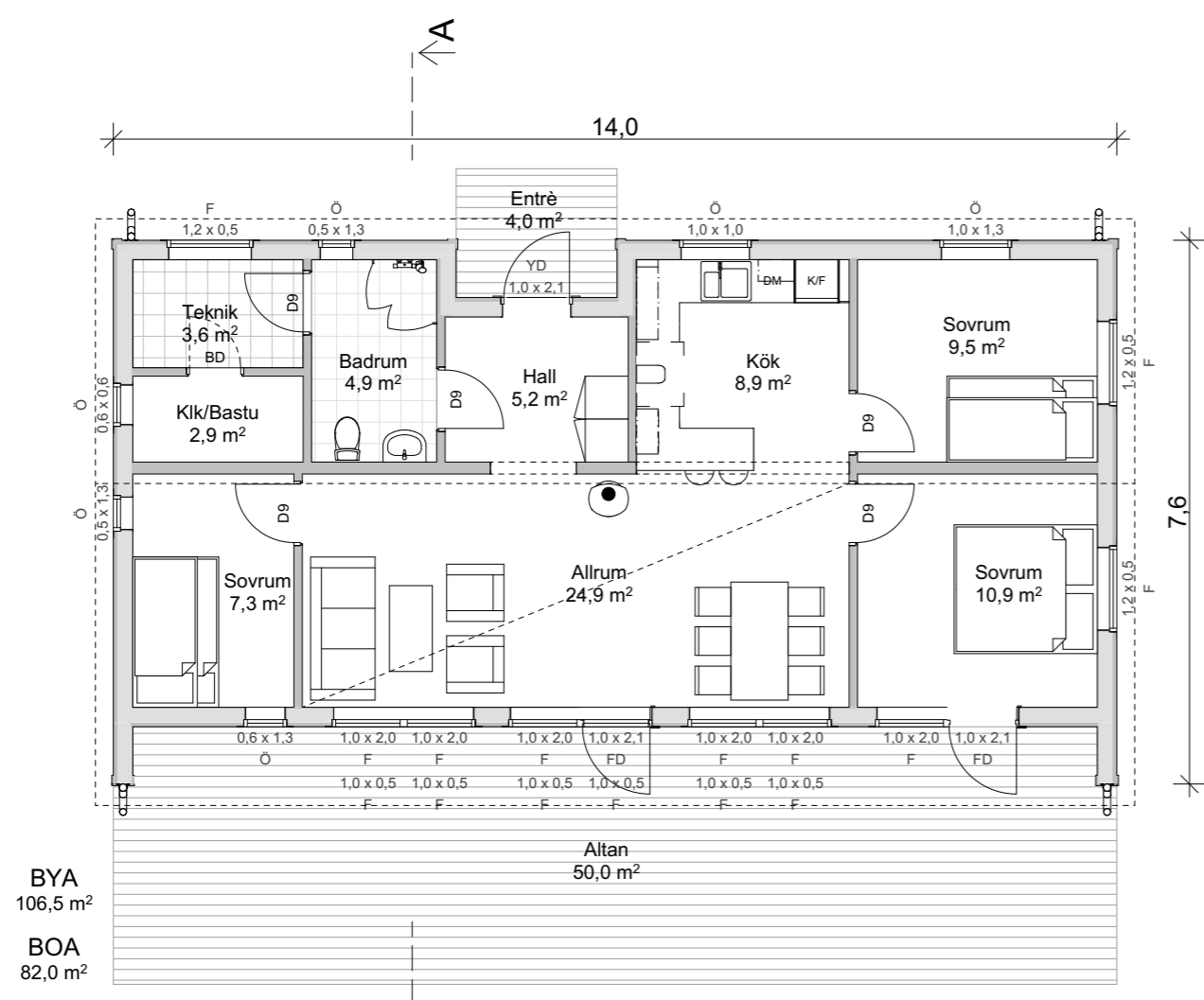
DATUM 20-12-18 RITAD AV OFFERTNR. STD

1-planshus Taklutning 27°/20°
4 rum och kök
Boyta 82,0 m²
Byggyta 106,5 m²

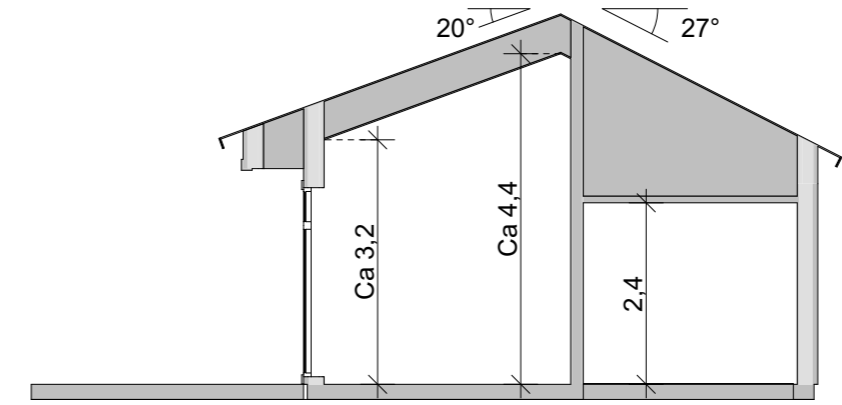
GODKÄND FÖR TILLVERKNING

NAMN:.....

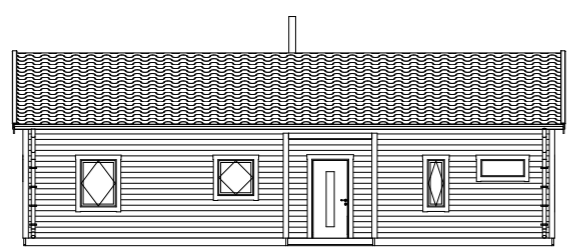
DATUM:.....



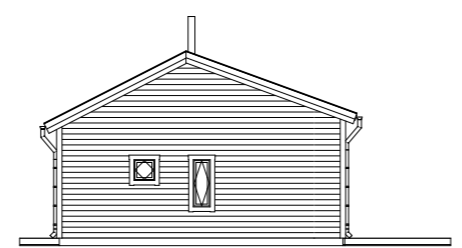
Plan 1
1:100



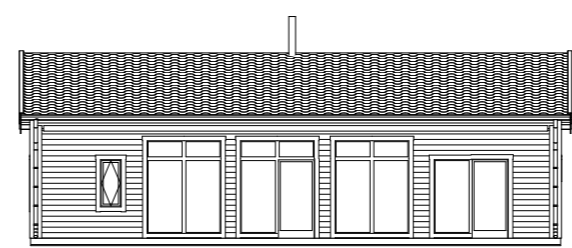
Sektion A
1:100



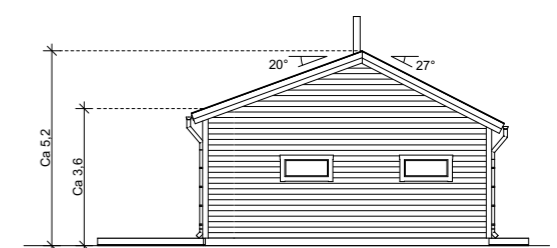
Fasad A1
1:200



Fasad A2
1:200



Fasad A3
1:200



Fasad A4
1:200