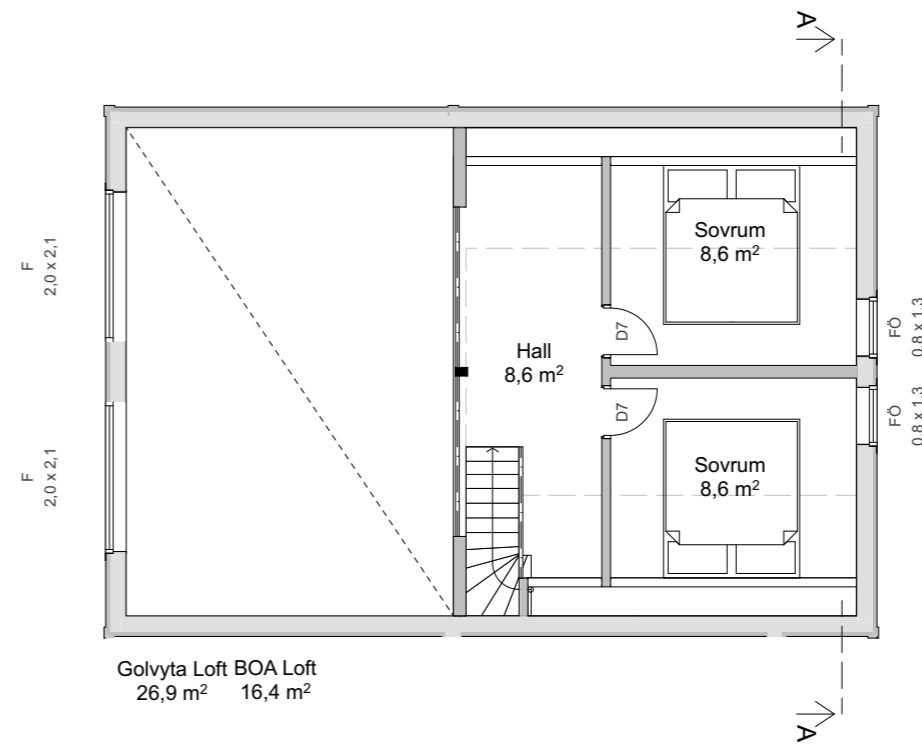
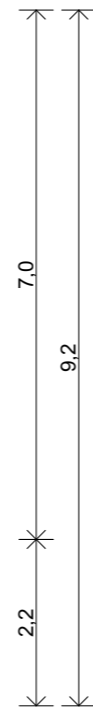
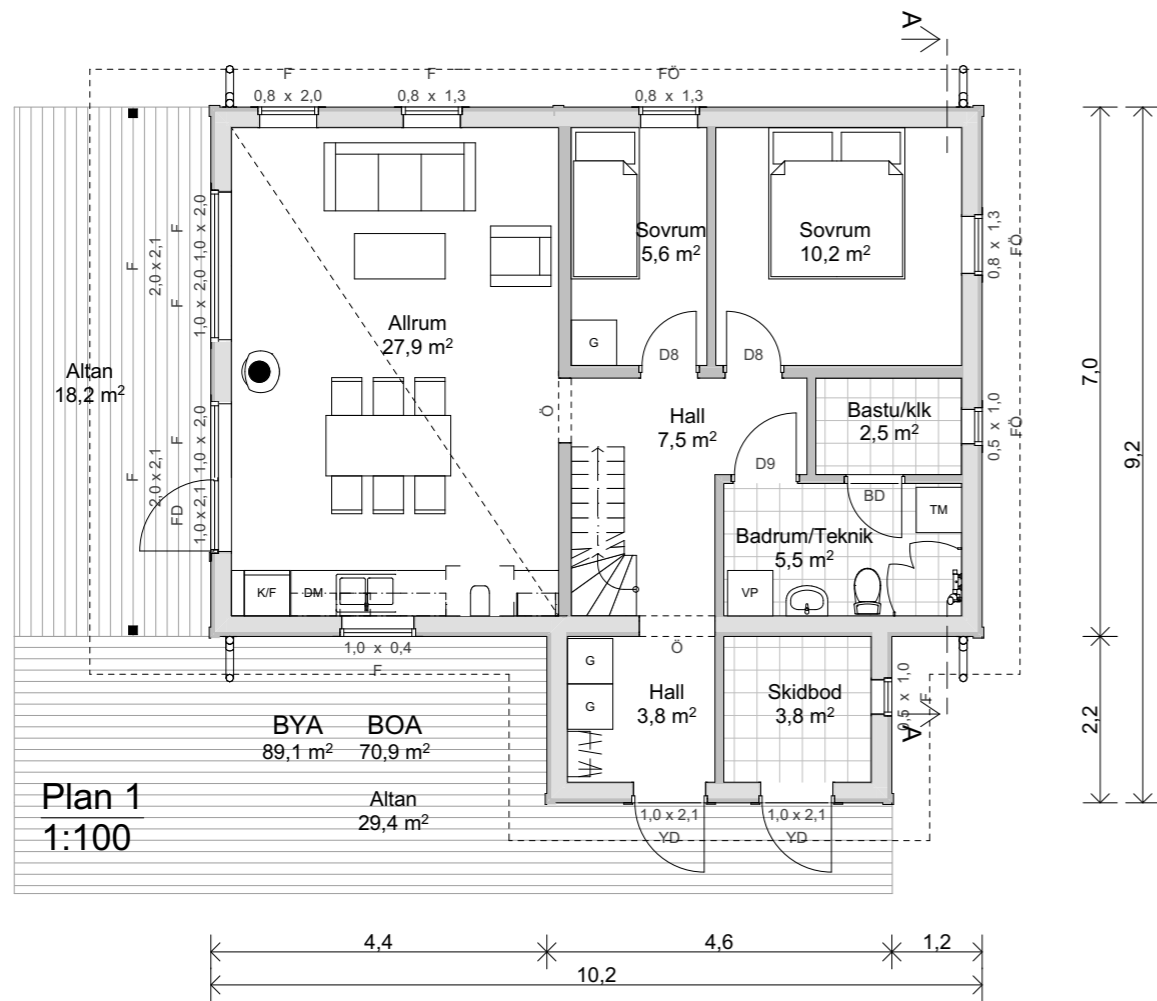
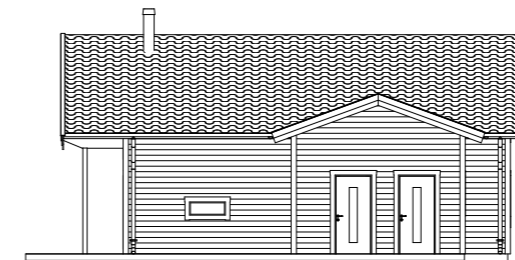
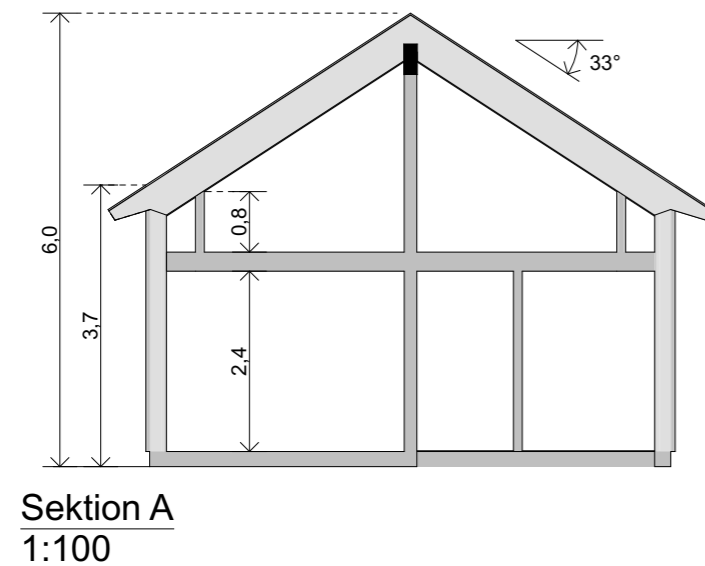


Standardritning
 Klöverfors 89
Jörnträhus
 www.jorntrahus.se

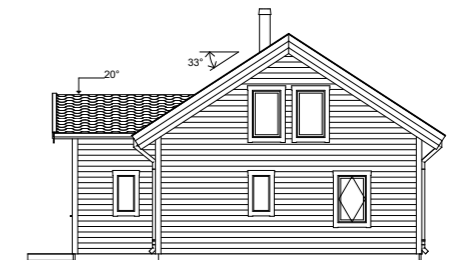
DATUM 20-06-11 RITAD AV OFFERTNR. STD
 1-planshus med loft Taklutning 33°/20°
 Boyta 70,9+16,4 m²
 Byggyta 89,1 m²
 Golvyta Loft 26,9 m²
GODKÄND FÖR TILLVERKNING
 NAMN:.....
 DATUM:.....



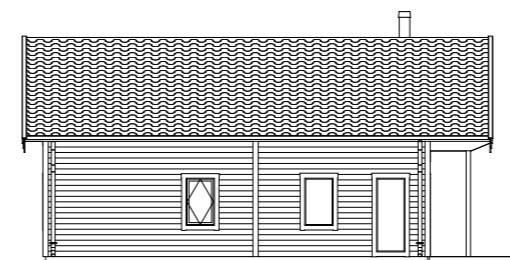
Golvyta Loft BOA Loft
 26,9 m² 16,4 m²



Fasad A1
1:200



Fasad A2
1:200



Fasad A3
1:200



Fasad A4
1:200